




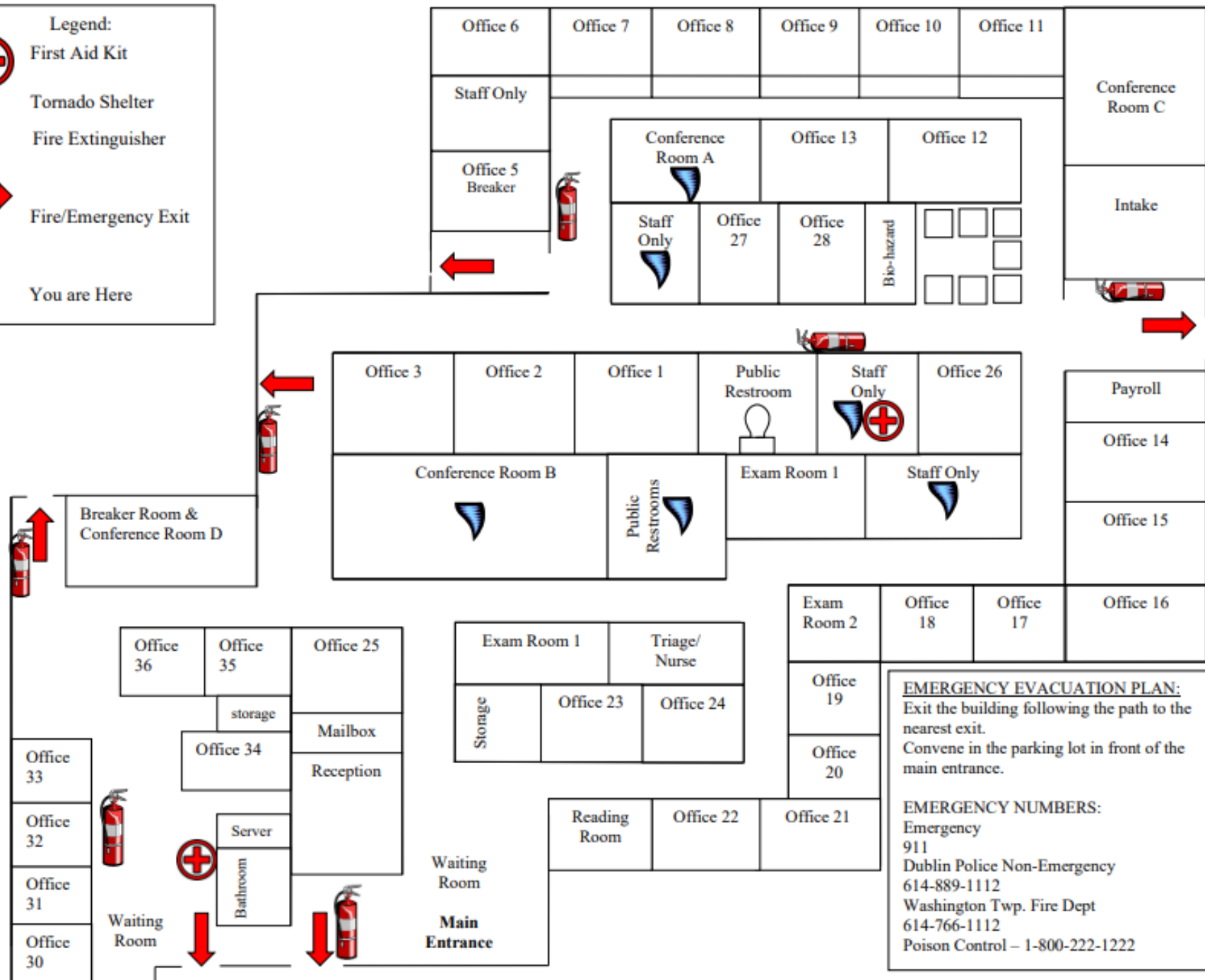


DUBLIN EMERGENCY EVACUATION PLAN

Legend:

-  First Aid Kit
-  Tornado Shelter
-  Fire Extinguisher
-  Fire/Emergency Exit
-  You are Here



EMERGENCY EVACUATION PLAN:
 Exit the building following the path to the nearest exit.
 Convene in the parking lot in front of the main entrance.

EMERGENCY NUMBERS:
 Emergency
 911
 Dublin Police Non-Emergency
 614-889-1112
 Washington Twp. Fire Dept
 614-766-1112
 Poison Control – 1-800-222-1222

Syntero Lewis Center EMERGENCY EVACUATION PLAN:


Exit the building by following the blue lines leading out of your location on the map to the nearest Exit. Convene in the parking lot in front of the main entrance.


EMERGENCY NUMBERS:


Emergency: 911


Poison Control: 1-800-222-1222

KEY

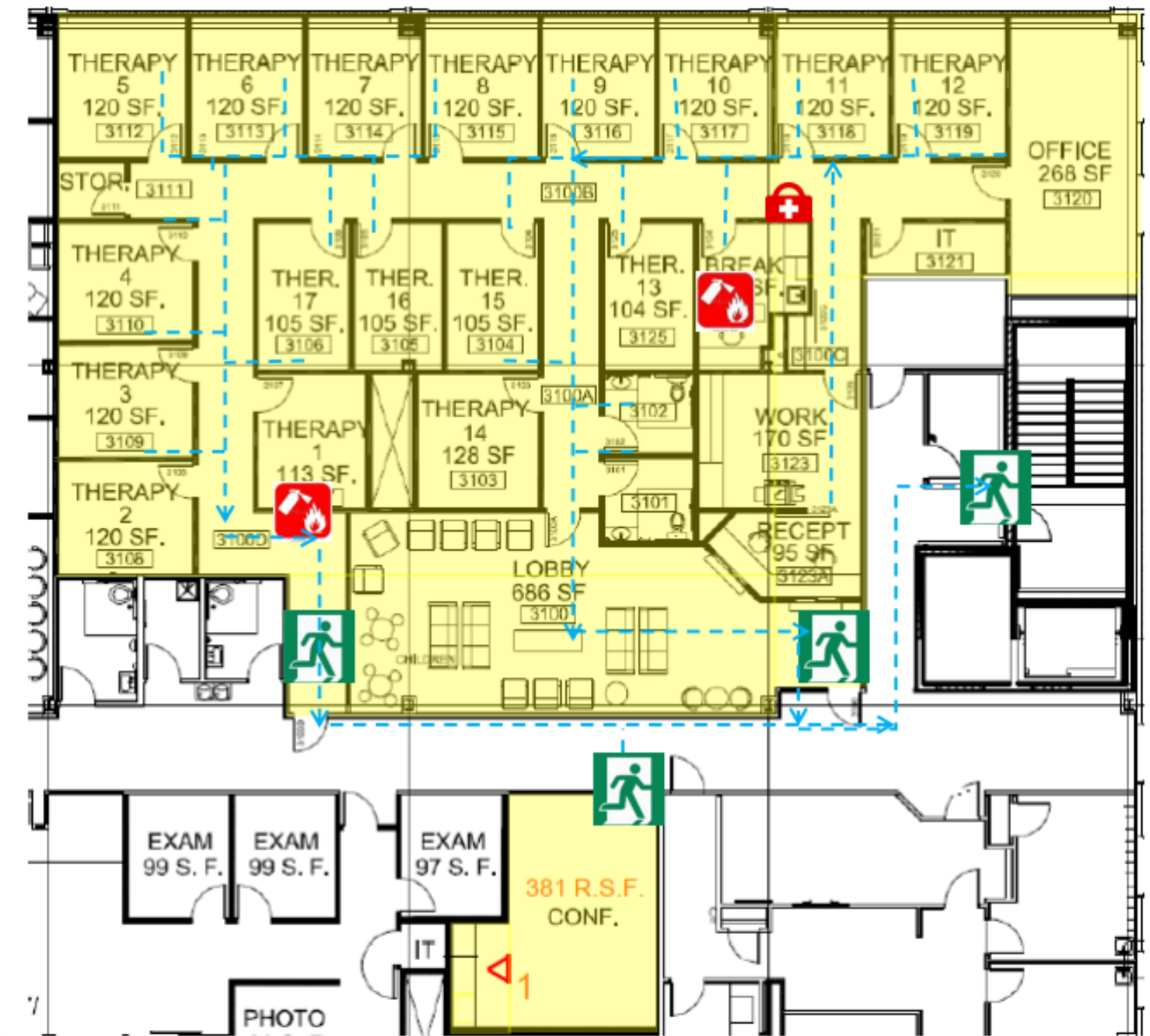
EXITS 

FIRE EXTINGUISHER 

FIRST AID KIT 

EXIT PATHS 

In case of a tornado siren, please take your nearest exit down to the first floor center hallway.



MILL RUN EMERGENCY EVACUATION PLAN

EMERGENCY EVACUATION PLAN:
 Exit the building following the path to the nearest exit.
 Convene in the parking lot in front of the main entrance.

EMERGENCY NUMBERS:
 Emergency – 911
 Poison Control – 1-800-222-1222

